

Collect more SFC fractions with HPLC-like convenience

- Collect up to 24 fractions at atmospheric pressure
- Dry fractions while collecting
- Use standard glass collection tubes, bottles, scintillation vials, etc.
- Recover greater than 95% sample
- Use no fume hood space
- Connect to any commercial SFC, SFE or HPLC system
- Extend application of SFC, SFE or HPLC system through HPLC-like convenience and high fraction count



Modular SFC's CFC™-2 Centrifugal Fraction Collector (patent pending) delivers HPLC-like convenience to SFC isolation and purification. This novel instrument overcomes the past complexities and limitations of collecting high numbers of SFC fractions, and thus allows chromatographers to take advantage of the inherent benefits of SFC. The CFC-2's Centri-Fan™ simultaneously dries fractions during the collection process. The compact, benchtop CFC-2 Fraction Collector is compatible with any SFC System.

Collect Multiple Fractions at Atmospheric Pressure

The CFC-2 collects up to 24 fractions in standard glass tubes, just like an HPLC fraction collector. Fractions are collected



at atmospheric pressure, eliminating the complexity and pressurized hardware requirements of conventional SFC fraction collectors. The HPLC-like convenience of the CFC-2 now extends SFC to new applications that were previously considered impractical for SFC.

High Recovery/High Productivity

The centrifugal technology employed by the CFC-2 captures non-volatile materials entrained in the gaseous CO₂ eluant stream with greater than 95% recovery. The highly efficient fraction collection methodology results in high yields with greater isolation productivity.

Centri-Fan Provides Simultaneous Fraction Drying and Fraction Collection

The CFC-2 Centri-Fan (patent pending) technology blows rotor chamber gas into the collection tubes while fractions are being collected. Centrifugal force generated by the rotor captures non-volatile sample particles from the eluant flow stream. The centrifugal force also maintains fraction integrity as the Centri-Fan delivers more than 50L per minute of airflow or inert gas to the fraction solutions. The rotor chamber is at atmospheric

pressure during the collect/dry operation so no vacuum pump is required.

Extending the Application of SFC with High Fraction Counts

The CFC-2 Centrifugal Fraction Collector allows broad polarity fractionation by SFC with up to 24 fraction collections without changing the sample collection tubes. SFC applications enabled by the CFC-2 Centrifugal Fraction Collector include:

- Fractionation of natural products and other complex mixtures
- Chiral purification
- Impurity isolation
- Isolation of metabolites and biomarkers from biological fluids
- Flash SFC

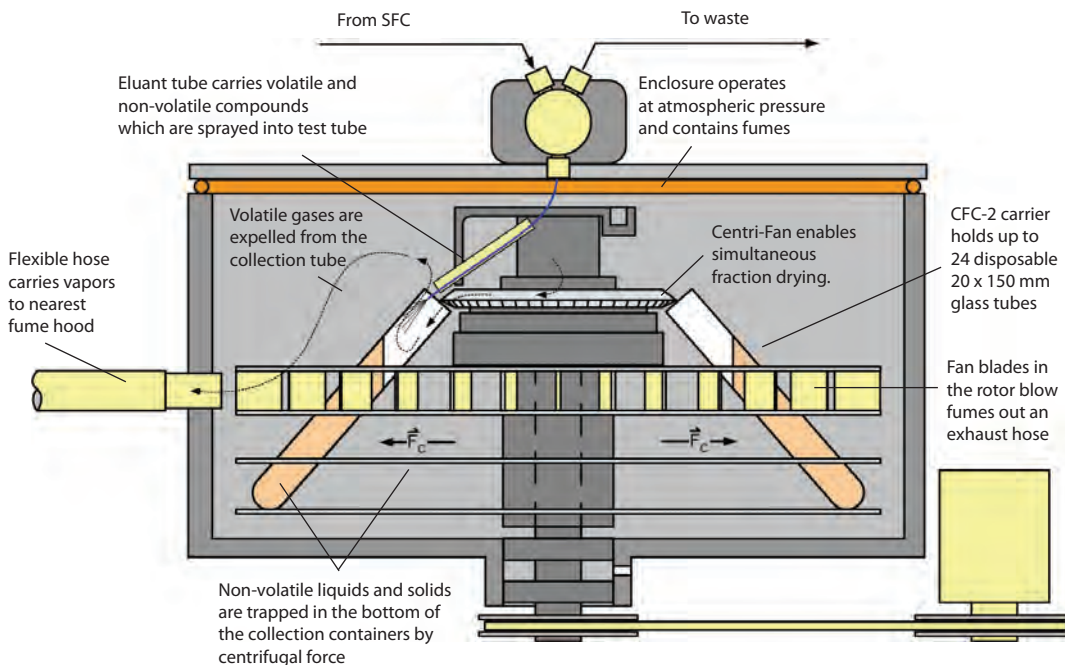
Space Saving Design

The compact CFC-2 Centrifugal Fraction Collector can be positioned anywhere on the lab benchtop rather than taking up space in a fume hood. Vapors are directed through an exhaust hose that can be connected to the laboratory vent system.

Novel Centrifugal Fraction Collection Technology Provides HPLC-like Convenience

Modular SFC's CFC™-2 spins up to 24 disposable fraction collection tubes at up to 1500 rpm. Fractions are directed to the containers via the patent pending E-tube™. Non-volatile liquid and solid components are driven to the bottom of the tubes, while gaseous components escape the open containers and are directed by fan blades in the rotor through an exhaust hose to the nearest fume hood. The Centri-Fan provides rapid drying of fractions by blowing up to 50 L/min of air or inert gas into the fraction tubes. Non-volatile sample is securely retained by centrifugal force.

Novel Centrifugal SFC Fraction Collection and Concentration System for SFC



Control Options

The CFC-2 Centrifugal Fraction Collector is compatible with any commercially available SFC system. The system can be controlled via:

- CFC-PC™ software allows collection by slope, threshold and/or time. Graphical interface provides simple fraction identification
- Contact closure from SFC instrument enabling WASTE/COLLECT and NEXT FRACTION.
- Simple embedded commands which allow up to 5 programs for collection by threshold or time including stacked injections.

All control options allow stacked injections and mass directed fractionation depending on the mass spec vendor.

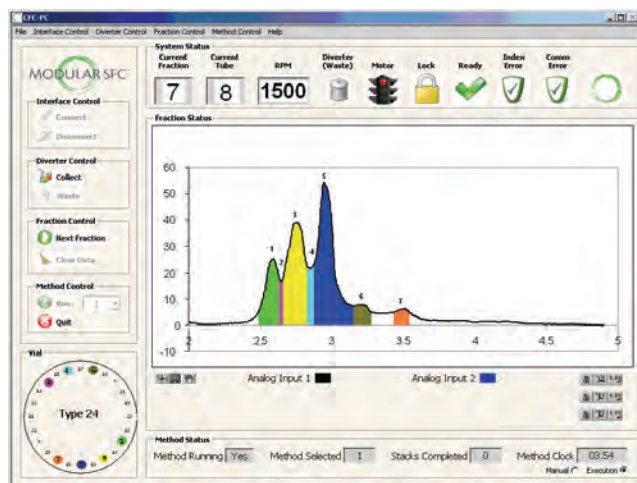
Specifications

Model	CFC-2
Fraction Collection Tubes:	24*
Tube Volume:	37 ml
Modifier Fraction Volume:†	<25 ml
Sample Recovery:	>95%
Dimensions (inches)	20W x 9H** x 26D

* Custom rotor configurations available

† Gas flow rate not relevant to collection volume.

** Diverter valve adds 4" to height at rear of the instrument



CFC-PC Control Software

About Modular SFC

Modular SFC is an instrument design and development company founded in 2007. The Company's goal is to provide scientists and researchers with components that will move Supercritical Fluid Chromatography (SFC) into the mainstream of chromatographic isolation and purification. The Company's first products are designed to improve the process of SFC fraction collection. Modular SFC filed for its first SFC fraction collection technology patents in January 2007 and is shipping its commercial CFC Series of benchtop fraction collectors.

